



WINSTON[®]

SPECIAL ORDER
2020

WINSTON®

OUTDOOR COLLECTIONS

Since 1975 Winston has answered to the growing trend toward outdoor styles with an indoor feel by offering ultra-comfortable furniture with original details, customizable finishes, and resort grade materials.

This season Winston embarks on a brand revival and a renewed commitment to offering comfort, function and style. We have thoughtfully curated a collection of outdoor furnishings that demonstrate technical form, innovative material construction and trend-forward designs for versatile applications and vast appeal.

We draw on our rich heritage in the outdoor furniture sector and aim to reclaim our position as an industry leader by staying true to the things that have worked for us in the past, while embracing exciting new models and fresh designs.

CONTENTS

COLLECTIONS

Banyon Bay
2 | 5

Belvedere Cushion
6 | 7

Belvedere Sling
8 | 9

Compass*
10 | 11

Jasper*
12 | 13

Key West Padded Sling
14 | 15

Key West Sling
16 | 17

Manor Deep Seating
18 | 19

Marseille
20 | 21

Palazzo Cushion
22 | 23

Palazzo Sling
24 | 25

Savoy Cushion
26 | 27

Savoy Sling
28 | 29

Seagrove II Sling
30 | 31

Southern Cay Cushion
32 | 33

Southern Cay Modular
34 | 35

Southern Cay Sling
36 | 37

Southern Cay Woven
38 | 39

Veneto Cushion
40 | 41

Veneto Sling
42 | 43

TABLES, ACCESSORIES & FINISHES

Extruded Aluminum
Slat Tops
44 | 45

Traditional Cast
Aluminum Tops
46 | 47

Solid Surface Stamped
Aluminum Tops
46 | 47

Table Bases For
Alternative Tops
48 | 49

Obscure Glass
Top Tables
50 | 51

Stamped Aluminum
Tables
50 | 51

Solid Top
Tables*
50 | 51

Frame
Finishes
52

* New Product Introductions

BANYAN BAY

Designed by John Caldwell

- Contemporary design | Modular aspect allows configurations for any setting
- Furniture components held together with two nylon clips | Nylon clips keep furniture from moving front/back and side/side
- Frame created from extruded aluminum | Cushions lock into frame without the need of ties
- Available in all finishes | Stamped aluminum table tops



BANYAN BAY | CUSHIONED SECTIONAL



Armless Lounge
M74002
32.5"W 32.5"D 32.5"H



Arm Lounge Chair
M74004
36.5"W 32.5"D 32.5"H



Square Corner Section
M74032
32.5"W 32.5"D 32.5"H



Circular Corner Section
M74033
32.5"W 32.5"D 32.5"H



Left or Right End Unit
M74035
32.5"W 32.5"D 32.5"H



Action Swivel Tilt Lounge Chair*
M74020
35"W 36"D 39"H



Circular Ottoman
M74038
32.5"W 32.5"D 18.5"H



Square Ottoman
M74008
32.5"W 32.5"D 18.5"H



Pedestal Ottoman
M74028
28"W 26"D 17"H



Oyster Weave

Having the look and feel of real rattan, this proprietary weave creation was the result of dedicated time and effort. The material itself is a mix of polyethylene and UV inhibitors with no acrylic additives. Both the texture and coloration are achieved from the hands of an extrusion artist who intuitively adds the correct amount of pigment to the weave during precise temperature intervals in the production process. The weave coloration is infused throughout the core of the weave. The result is a beautiful, natural weathered weave material. All pieces of Banyan Bay are hand woven, strand by strand, by highly skilled artists. One chair can take more than a day to weave.

Banyan Bay can be ordered with only solid or textured fabrics.
Patterned fabrics such as stripes and prints are not available on modular collections.



BANYAN BAY

Designed by John Caldwell

- Contemporary design
- Modular aspect allows configurations for any setting
- Furniture components held together with two nylon clips
- Nylon clips keep furniture from moving front/back and side/side
- Frame created from extruded aluminum
- Cushions lock into frame without the need of ties
- Available in all finishes
- Stamped aluminum table tops

BANYAN BAY | CUSHIONED SEATING



Cocktail Table w/ Stamped Top
M74007
32.5"W 32.5"D 18"H



Rectangular Coffee Table
M74067
40.5"W 24.5"D 18"H



24" End Table w/ Stamped Top
M74006
24"W 24"D 19.5"H



Console Table
M74050
64.5"W 15.5"D 26.5"H



Love Seat
M74022
64.5"W 33"D 30.5"H



Sofa
M74003
95.5"W 33"D 30.5"H



Oyster Weave

Having the look and feel of real rattan, this proprietary weave creation was the result of dedicated time and effort. The material itself is a mix of polyethylene and UV inhibitors with no acrylic additives. Both the texture and coloration are achieved from the hands of an extrusion artist who intuitively adds the correct amount of pigment to the weave during precise temperature intervals in the production process. The weave coloration is infused throughout the core of the weave. The result is a beautiful, natural weathered weave material. All pieces of Banyan Bay are hand woven, strand by strand, by highly skilled artists. One chair can take more than a day to weave.

Banyan Bay can be ordered with only solid or textured fabrics.
Patterned fabrics such as stripes and prints are not available on modular collections.

BELVEDERE CUSHION

Designed by John Caldwell

Transitional design | Extra wide, multi-dimensional aluminum extrusion | High back cushion buckets add exceptional comfort
Mesh sling seat for cushion add comfort and accelerate cushion drying | Cushions designed with a "kidney cushion" for lower back comfort
Welts can be ordered in coordinating fabric | Available in all finishes



BELVEDERE CUSHION | DINING & SEATING



Dining Chair
M29001
27.5"W 32.5"D 42"H



Swivel Tilt Dining Chair*
M29049
27.5"W 32.5"D 42"H



Lounge Chair
M29002
29.5"W 33"D 39.5"H



Ultra Swivel Tilt Lounge Chair*
M29020
30"W 33"D 41.5"H



Chaise Lounge with Skate Wheels
M29009
30.5"W 84.5"D 50.5"H



Double Chaise Lounge with Skate Wheels
M29069
56.5"W 84.5"D 50.5"H



Ottoman
M29008
30"W 21.5"D 16.5"H



Love Seat
M29022
54.5"W 33"D 39.5"H



Love Seat Glider*
M29021
54.5"W 33"D 39.5"H



Stationary Sofa
M29003
79"W 33"D 39.5"H



Sofa Glider*
M29031
79"W 33"D 39.5"H

BELVEDERE SLING

Designed by John Caldwell

Transitional design | Extra wide, multi-dimensional aluminum extrusions

| Available in high back and ultimate high back sling buckets

| Seat buckets are ergonomically shaped for comfort | Available in all finishes



BELVEDERE SLING | DINING & SEATING



High Back Dining Chair
M59001
29"W 26.5"D 38.5"H



Ultimate High Back Dining Chair
M59041
26.5"W 30"D 44"H



High Back Swivel Tilt Chair*
M59049
26.5"W 28.5"D 39.5"H



Ultimate High Back Swivel Tilt Chair*
M59059
26.5"W 30.5"D 44"H



Swivel Tilt Chat Chair*
M59079
28.5"W 30.5"D 42"H



Ottoman
M59008
26"W 21.5"D 16"H



Swivel Balcony Height Stool*
M59013B
26.5"W 27"D 44"H



Swivel Bar Stool*
M59013
26.5"W 27"D 49.5"H



Arm Stack Chaise with Skate Wheels
M59009
30.5"W 79"D 43"H



Armless Stack Chaise with Skate Wheels
M59029
28.5"W 79"D 43"H

COMPASS

Cushion and strap seating options available | Rustproof resort grade aluminum frames
| Sunbrella® Suncloth straps available in two colors | Available in all finishes



COMPASS | CUSHION & STRAP SEATING



Chat Chair
M2012
26.25"W 27"D 34.75"H



Swivel Chat Chair*
M2079
26"W 28"D 35.25"H



Lounge Chair
M20002
28.25"W 31.5"D 39.75"H



Swivel Lounge*
M20020
28.25"W 31.5"D 39.75"H



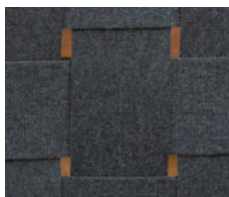
Ottoman
M20008
28"W 28"D 20.75"H



Sofa
M20003
77.5"W 31.5"D 39.75"H



Love Seat
M20022
53"W 31.75"D 40"H



Sunbrella® Suncloth Strap

An innovative update to the look and feel of traditional strap furniture, Compass is constructed with revolutionary Suncloth Straps. Made with reinforced Sunbrella® yarns, Suncloth Straps are intentionally crafted to deliver both style and comfort with an elastomeric construction that gently adjusts to your position. In contrast to the stiffness of vinyl, which can crack and discolor, Suncloth Straps are soft, inviting and engineered to resist soil, abrasion and UV light.

JASPER

Designed by John Caldwell

Transitional, rustic design | All-weather wicker | Rustproof resort grade aluminum frames
| Optional seat pads available | Available in all finishes





Lounge Chair
M81002-J
32"W 30"D 33¼"H



Swivel Lounge Chair*
M81020-J
30"W 31.5"D 33¼"H



Spa Lounge Chair
M81007-J
28.5"W 24"D 27.75"H



Arm Dining Chair
M81001-J
26"W 28.5"D 35.5"H



Swivel Arm Dining Chair*
M81049-J
26"W 28.25"D 35.5"H



Arm Bar Stool
M81014-J
26"W 28.5"D 45.75"H



Drum Stool/Side Table
M81086-J
18"W 18"D 18"H



Ottoman
M81008-J
24.25"W 21.5"D 15.5"H



Sofa
M81003-J
86"W 30"D 33.25"H



Loveseat
M81022-J
59.25"W 30"D 33.25"H



Chaise
M81009-J
34"W 82.5"D 45.75"H

Seat Pads Available

Designed to maintain the slim profile and clean lines of the Jasper collection, these low-profile pads add just the right amount of additional support. Available with or without back cushion for customizable comfort.



Beechwood Weave

The Jasper weave has a sophisticated, delicate look combined with sturdy construction. All-weather wicker with a textural, multi-color finish in an aged beechwood tone is woven in a breathable open pattern for the airy look of classic cane or rattan without the worry of cracks and fading. The aluminum extrusion frames and angled silhouette give Jasper modern appeal with timeless detail.

KEY WEST PADDED SLING

Transitional design | Created from heavy-walled octagonal aluminum extrusions
Nylon foot glides protect furniture and floor surface | Sling rail extrusion with ergonomic design
Sling rail nylon end caps are color matched to frame color | Available in all finishes



KEY WEST PADDED SLING | SEATING & DINING



Ultimate High Back Dining Chair

M8041PS
25½"W 29"D 44"H

Also Available:

High Back Dining Chair

M8001PS
25½"W 30"D 38"H



Adjustable Chair*

M8017PS
25½"W 40½"D 38"H



Swivel Bar Stool*

M8013PS
25½"W 31½"D 48¼"H



Ottoman

HQ8008PS
23"W 22"D 17"H



Swivel Tilt Chat Chair*

M8079PS
27"W 30"D 40½"H



Ultimate High Back Swivel Tilt Chair*

M8059PS
25½"W 30"D 43½"H

Also Available:

High Back Swivel Tilt Chair*

M8049PS
25½"W 30½"D 37½"H



High Back Chair Glider*

M8011PS
25½"W 30½"D 38"H

Also Available:

Love Seat Glider*

M8021PS
46"W 31½"D 37½"H



Stackable Chaise

M7229PS
27½"W 82½"D 41"H

Also Available:

Chaise

M8009PS
27"W 71½"D 34½"H

KEY WEST SLING

Transitional design | Created from heavy-walled octagonal aluminum extrusions
| Nylon foot glides protect furniture and floor surface | Sling rail extrusion with ergonomic design
| Sling rail nylon end caps are color matched to frame color | Available in all finishes



KEY WEST SLING | SEATING & DINING



High Back Dining Chair
M8001R
25.5"W 30"D 38"H



Ultimate High Back Dining Chair
M8041
25.5"W 29"D 44"H



Ultimate High Back Swivel Tilt Chair*
M8059
25.5"W 30"D 43.5"H



High Back Swivel Tilt Chair*
M8049R
25.5"W 30.5"D 37.5"H



High Back Chair Glider*
M8011R
25.5"W 30.5"D 38"H



Adjustable Chair*
M8017
25.5"W 40.5"D 38"H



Ottoman
M8008
23"W 22"D 17"H



Swivel Bar Stool*
M8013R
25.5"W 31.5"D 48.25"H



Love Seat Glider*
M8021
46"W 31.5"D 37.5"H



Stackable Chaise Lounge
M7229R
27.25"W 82.5"D 41"H



Chaise Lounge
M8009
27"W 71.5"D 34.5"H



MANOR DEEP SEATING

Designed by John Caldwell

Transitional design | Created from cast and extruded aluminum materials | Fabric mesh seating substructure for comfort and cushion venting
| Ergonomically shaped back frame for added comfort | Ultra high back design for relaxing comfort
| Nylon foot glides protect furniture and floor surface | Available in all finishes

MANOR DEEP SEATING | CUSHIONED SEATING



Ultra Swivel Tilt Lounge Chair*
M42020
30"W 36.5"D 42.5"H



Ultra Lounge
M42002
30"W 36.5"D 42.5"H



Ultra Love Seat
M42022
56"W 36.5"D 42.5"H



Ottoman
M42008
30"W 27"D 17.25"H



Ultra Sofa
M42003
82"W 36.5"D 42.5"H



Chaise Lounge
M42009
30"W 83.25"D 43.5"H



COORDINATES WITH MARSEILLE DINING

The Marseille and Manor collections share a classic aesthetic with modern material updates to allow for seamless coordination and multiple configurations. From the shared arm detail to the overall construction and design, these two collections were made for each other.

MARSEILLE (MANOR COLLECTION)

Designed by John Caldwell

Transitional design | Created from cast and extruded aluminum materials

| Generously proportioned seat bucket design | Nylon foot glides protect furniture and floor surface

| Ergonomically formed seat and back for enhanced comfort | Available in all finishes



MARSEILLE | CAST/EXTRUDED ALUMINUM DINING



Dining Chair
M43001
25.5"W 25.5"D 34.5"H



Bench
M43023
45"W 25.5"D 34.5"H



Swivel Tilt Dining Chair*
M43049
25.5"W 25.5"D 34.5"H



Swivel Balcony Height Stool*
M43013B
25.5"W 26"D 38.5"H



Swivel Bar Stool*
M43013
25.5"W 27.5"D 43.5"H



CAST ALUMINUM

Cast aluminum is heavier than extruded aluminum but lighter and more durable than traditional wrought iron pieces making it the perfect choice for those who appreciate a classic aesthetic with sturdy construction and very little maintenance. The ornately interlaced patterns, light textural feel and rich powder-coat finish of Marseille are exemplary of the attention to detail and superb craftsmanship behind this collection.

COORDINATES WITH MANOR DEEP SEATING

The Marseille and Manor collections share a classic aesthetic with modern material updates to allow for seamless coordination and multiple configurations. From the shared arm detail to the overall construction and design, these two collections were made for each other.





PALAZZO CUSHION

Designed by John Caldwell

Transitional design | Created from heavy-walled rectangular aluminum extrusion | Solid aluminum side frame design element
| Cushion tailoring includes button and welt | Button and welt can be made with coordinating fabric
| Vinyl strap cushion seat substructure | Available in all finishes

PALAZZO CUSHION | CUSHIONED DINING & SEATING



High Back Dining Chair
M23001
26.5"W 34"D 43"H



High Back Swivel Tilt Chair*
M23049
26.5"W 34"D 43"H



Spring Base Lounge Rocker*
M23019
28.5"W 34.5"D 36"H



Ottoman
M23008
28"W 25"D 18.5"H



Swivel Balcony Height Stool*
M23013B
26"W 32.5"D 48.5"H



Swivel Barstool*
M23013
26"W 32.5"D 53"H



Ultra Swivel Tilt Lounge Chair*
M23020
28"W 34.75"D 42.5"H



Lounge Chair Glider*
M23011
28"W 35"D 36"H



Lounge Swivel Rocker*
M23018
28.5"W 34.5"D 36"H



Love Seat Glider*
M23021
52.5"W 35"D 36"H



Chaise Lounge
M23009R
27"W 72"D 36"H



Sofa Glider*
M23031
77"W 35"D 36"H



Stationary Sofa
M23003
77"W 35"D 36"H

PALAZZO SLING

Transitional design | Created from heavy-walled rectangular aluminum extrusion

| Solid cast aluminum side frame and arm detail design element | Ergonomically formed sling bucket - available in two heights

| Sling rail nylon end caps are color matched to frame color | Available in all finishes



PALAZZO SLING | DINING & SEATING



High Back Dining Chair
M4301R
24.5"W 30.5"D 38"H



Ultimate High Back Dining Chair
M4341
24.5"W 30.5"D 44"H



Ultimate High Back Swivel Tilt Chair*
M4359
24.5"W 29.5"D 43.5"H



High Back Swivel Tilt Chair*
M4349R
24.5"W 29.5"D 37.5"H



Adjustable Chair*
M4617
24.5"W 42.5"D 36.5"H



Ottoman
M4608
24.5"W 21"D 18"H



Swivel Bar Stool*
M4693
22.25"W 27"D 44.75"H



Swivel Balcony Height Stool*
M4693B
22.25"W 27"D 39.75"H



Swivel Bar Stool*
M4313
24.5"W 30.5"D 46.5"H



Swivel Balcony Height Stool*
M4313B
24.5"W 30.5"D 42"H



Love Seat Glider*
M4321
45"W 30"D 38"H



Chaise Lounge
M4309
26"W 71"D 35.5"H

SAVOY CUSHION

Designed by John Caldwell

- Transitional design | All extruded frame | Multi-dimensional extrusion
- | Cushions can be ordered with a coordinating button and welt fabric
- | Nylon foot glides protect furniture and floor surface
- | Vinyl strap cushion seat substructure | Available in all finishes



SAVOY CUSHION | CUSHIONED DINING & SEATING



Lounge Chair
M24002
29"W 36"D 40"H



Boat Shape Ottoman
M24058
30.5"W 42.5"D 19.5"H



Ultra Swivel Tilt Lounge Chair*
M24020
29"W 36"D 42.5"H



Ottoman
M24008
30"W 25.5"D 19"H



Dining Chair
M24001
27"W 31"D 41"H



Chaise Lounge
M24009
33"W 75.25"D 46.5"H



Swivel Tilt Dining Chair*
M24049
27"W 31"D 41"H



Love Seat
M24022
54"W 36"D 40"H
Also Available:
Love Seat Glider*
M24021



Sofa
M24003
77.5"W 36"D 40"H
Also Available:
Sofa Glider*
M24031



Crescent Love Seat
M24052
61"W 35"D 41.5"H



Crescent Sofa
M24053
90"W 39.5"D 41.5"H

SAVOY SLING

Designed by John Caldwell

Transitional design | All extruded frame | Multi-dimensional extrusion
| "Center seat" bracing on dining chair eliminates lower leg bracing | Nylon foot glides protect furniture and floor surface
| Sling rail extrusion with ergonomic design | Sling rail nylon end caps are color matched to frame color | Available in all finishes



SAVOY SLING | DINING & SEATING



High Back Dining Chair
M54001
25.75"W 30.75"D 38"H



Ultimate High Back Dining Chair
M54041
25.75"W 30.75"D 42.75"H



Ottoman
M54008
25.75"W 24.25"D 16.25"H



Ultimate High Back Swivel Tilt Chair*
M54059
25.75"W 30.5"D 42.75"H



High Back Swivel Tilt Chair*
M54049
25.75"W 30.5"D 38"H



Swivel Tilt Chat Chair*
M54079
28"W 31"D 40.5"H



Bar Stool*
M54013
25.75"W 30.5"D 47.25"H



Balcony Height Stool*
M54013B
25.75"W 30.5"D 42.25"H



Chaise Lounge
M54009
27.5"W 70.5"D 43.25"H

SEAGROVE II SLING

- Transitional design | Created from heavy-walled multi-dimensional aluminum extrusions
- Nylon foot glides protect furniture and floor surface | Ergonomically formed sling bucket - available in two heights
- Sling rail nylon end caps are color matched to frame color | Available in all finishes



SEAGROVE II SLING | DINING & SEATING



Stackable High Back Dining Chair*
M62001
26"W 30"D 38"H



Stackable Ultimate High Back Dining Chair*
M62041
26"W 30"D 43"H



High Back Swivel Tilt Chair*
M62049
25"W 29.5"D 38.5"H



Ultimate High Back Swivel Tilt Chair*
M62059
25"W 29.5"D 43.5"H



Love Seat Glider*
M62021
45.5"W 30"D 34"H



Adjustable Chair*
M62017
25"W 40.5"D 39"H



Chaise Lounge
M7229R
27.5"W 82.5"D 41"H



Ottoman*
M62008
25"W 21"D 17.5"H

SOUTHERN CAY CUSHION

Designed by John Caldwell

Contemporary design | Created from heavy-walled elliptical aluminum extrusions | Ergonomic shaped back frame for added comfort
| Vinyl strap cushion seat substructure | Nylon foot glides protect furniture and floor surface | Available in all finishes



SOUTHERN CAY CUSHION | DINING & SEATING



Stationary Lounge
M36002
30.5"W 32.5"D 35.5"H



Lounge Swivel Rocker*
M36018
30.75"W 31.25"D 36"H



Ottoman
M36008
28"W 23.5"D 18"H



Sofa
M36003
78.5"W 32.5"D 35.5"H



Love Seat
M36022
54.5"W 32.5"D 35.5"H



Dining Chair
M36001
27.5"W 32.5"D 37"H



Chaise Lounge
M36009
29.5"W 85.5"D 51"H



Swivel Tilt Dining Chair*
M36049
27.5"W 29.5"D 37"H



SOUTHERN CAY MODULAR

Designed by John Caldwell

- Contemporary design
- Created from heavy-walled elliptical aluminum extrusions
- Ergonomic shaped back cushion for added comfort
- Aluminum strap cushion seat substructure
- Nylon foot glides protect furniture and floor surface
- All modular pieces are held together with specially designed "U" clip
- Available in all finishes

SOUTHERN CAY MODULAR | SECTIONAL SEATING



Single Unit
M35002
35"W 35"D 28"H 16"SH



Lounge Chair
M35004
35"W 33"D 28"H 16"SH



Circular Corner Unit
M35033
35"W 35"D 28"H 16"SH



Square Corner Unit
M35032
35"W 35"D 28"H 16"SH



Double Unit
M35022
35"W 70"D 28"H 16"SH



Square Ottoman
M35008
35"W 35"D 16"H 16"SH



Circular Ottoman
M35038
35"W 35"D 16"H 16"SH



Coffee Table
M35007
Stamped Aluminum Top
35"W 35"D 14.5"H



Occasional Table
M35006
Stamped Aluminum Top
21"W 21"D 19"H



Combine four M35038
Circular Ottomans to
create a round bed



Combine two Circular
Corner Units and two
Circular Ottomans to create
a circular chaise bed

Southern Cay Modular can only be ordered with solid or textured fabrics. Patterned fabrics such as stripes and prints are not available on modular collections.

Design Patents D698,170; D698,169; D698,174; D698,173

SOUTHERN CAY SLING

Designed by John Caldwell

Contemporary design | Created from heavy-walled elliptical aluminum extrusions
| Nylon foot glides protect furniture and floor surface
| Sling rail extrusion with ergonomic design | Available in all finishes



SOUTHERN CAY SLING | DINING & SEATING



Nesting Dining Chair
M66001
24.5"W 28.25"D 34"H



Swivel Tilt Dining Chair*
M66049
27.5"W 28.25"D 34.25"H



Ottoman
M66008
25.25"W 21.5"D 17.5"H



Stationary Balcony Height Stool
M66014B
27.5"W 27.5"D 39.75"H



Stationary Bar Stool
M66014
27.5"W 27.5"D 45.5"H



Stacking Sand Chair
M66006
27.25"W 30"D 26.25"H



Stacking Chaise Lounge without Arms
M66009
26.5"W 80"D 44.25"H



Chaise Lounge
M66009A
29.5"W 80"D 44.25"H



SOUTHERN CAY WOVEN

Designed by John Caldwell

Contemporary design | Created from heavy-walled elliptical aluminum extrusions
| Nylon foot glides protect furniture and floor surface | Woven buckets available in high back and ultimate high back
| Available in all finishes



High Back Dining Chair
M76001
27.5"W 26.5"D 35.5"H



High Back Swivel Tilt Chair*
M76049
27.5"W 26.5"D 36"H



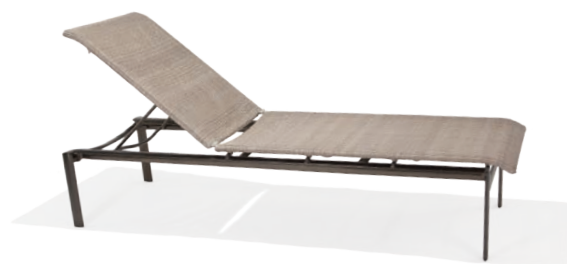
Ottoman
M76008
25.5"W 22"D 17"H



Stationary Balcony Height Stool
M76014B
27.5"W 26.5"D 41.5"H



Stationary Bar Stool
M76014
27.5"W 26.5"D 46.5"H



Armless Stack Chaise
M76009
26.5"W 80"D 44"H



Chaise Lounge
M76009A
29.5"W 80"D 44"H



Oyster Weave

Having the look and feel of real rattan, this proprietary weave creation was the result of dedicated time and effort. The material itself is a mix of polyethylene and UV inhibitors with no acrylic additives. Both the texture and coloration are achieved from the hands of an extrusion artist who intuitively adds the correct amount of pigment to the weave during precise temperature intervals in the production process. The weave coloration is infused throughout the core of the weave. The result is a beautiful, natural weathered weave material. All pieces of Banyan Bay are hand woven, strand by strand, by highly skilled artists. One chair can take more than a day to weave.



VENETO CUSHION

Designed by John Caldwell

Traditional design | All extruded frame | Multi-dimensional extrusion | Cushions can be ordered with a coordinating button and welt fabric
| Nylon foot glides protect furniture and floor surface | Vinyl strap cushion seat substructure | Available in all finishes

VENETO CUSHION | CUSHIONED DINING & SEATING



High Back Dining Chair
M25001
25.5"W 30.5"D 41"H



High Back Swivel Tilt Dining Chair*
M25049
25.5"W 30.5"D 41"H



Lounge Chair
M25002
28"W 35"D 40"H



Ultra Swivel Tilt Lounge Chair*
M25020
28"W 35"D 42.5"H



Boat Shape Ottoman
M25058
30.5"W 42.5"D 19"H



Chaise Lounge
M25009
32"W 75"D 46"H



Ottoman
M25008
27.5"W 25.5"D 19.5"H



Love Seat
M25022
52"W 35"D 40"H
Also Available:
Love Seat Glider*
M25021



Sofa
M25003
76.75"W 35"D 40"H
Also Available:
Sofa Glider*
M25031



Crescent Love Seat
M25052
59.5"W 35"D 41.5"H



Crescent Sofa
M25053
88"W 39.5"D 41.5"H

VENETO SLING

Designed by John Caldwell

Transitional design | All extruded frame | Multi-dimensional extrusion | Nylon foot glides protect furniture and floor surface
| Sling rail nylon end caps are color matched to frame color | Slim-line sling rail extrusion with ergonomic design | Available in all finishes



VENETO SLING | DINING & SEATING



High Back Dining Chair
M55001
24.5"W 29.75"D 38"H



Ultimate High Back Dining Chair
M55041
24.5"W 29.75"D 43.5"H



High Back Swivel Tilt Chair*
M55049
24.5"W 29.75"D 38"H



Swivel Tilt Chat Chair*
M55079
26.5"W 30.25"D 40.5"H



Ultimate High Back Swivel Tilt Chair*
M55059
24.5"W 29.75"D 42.75"H



Ottoman
M55008
24.25"W 21.75"D 16.25"H



Swivel Bar Stool*
M55013
24.5"W 29.75"D 47.75"H



Swivel Balcony Height Stool*
M55013B
24.25"W 29.75"D 43"H



Chaise Lounge
M55009
29"W 82"D 42.5"H

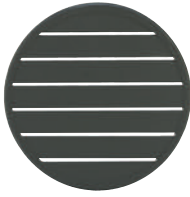
EXTRUDED ALUMINUM SLAT TOPS

Transitional design | Constructed from light weight extruded aluminum | Available in all finishes

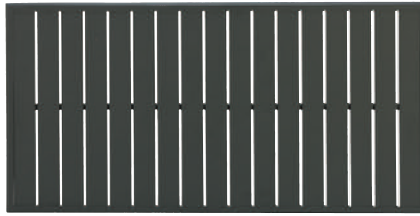


EXTRUDED ALUMINUM SLAT TOPS

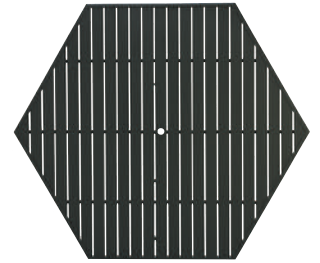
Crafted using extruded aluminum for a lighter weight, yet durable top that blends easily with many styles.
Designed to coordinate with and accommodate various seating arrangements. Available in all finishes.



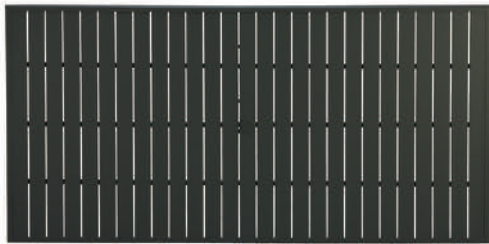
23.5" Round Top
MESL-024
24" Square Top
MESL-S24



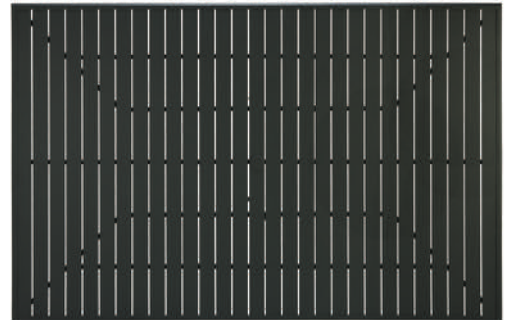
27" x 54" Rectangular Cocktail/Dining Top
MESL-052
Top fits bases M9307B and M9907B and
Balcony Bases M9352B and M9352BB



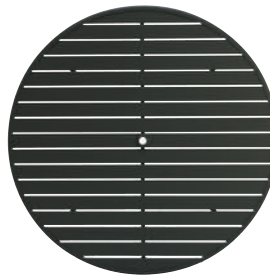
64" Hexagonal Dining Top with Hole
MESL-H64



42" x 85" Rectangular Dining Top with Hole
MESL-084
42" x 73" Rectangular Dining Top with Hole
MESL-073



60" x 91" Rectangular Dining Top with Hole
MESL-090



54" Round Top with Hole
MESL-054
42" Round Top with Hole
MESL-R42
42" Square Top with Hole
MESL-S42
48" Round Top with Hole
MESL-048

NOTE THAT TOPS AND BASES ARE SOLD SEPARATELY.

Dining table bases are "KD" (knock down - assembly required). On "KD" table bases the cast aluminum bracket attaches the legs to the inner ring.
Easy to follow instructions for assembly are included with each table base.

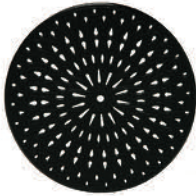
TRADITIONAL CAST ALUMINUM TOPS

Traditional design | Coordinates with multiple styles and designs | Constructed of heavy duty cast aluminum | Available in all finishes

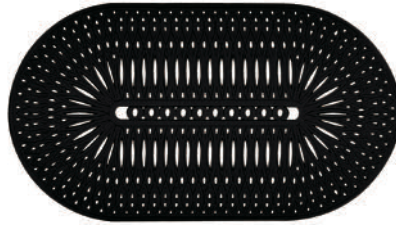


TRADITIONAL CAST ALUMINUM TOPS

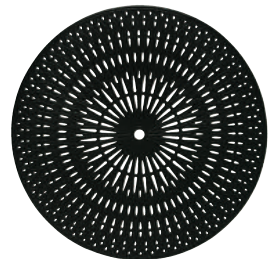
Sturdy cast construction that is heavier than extruded aluminum with durability to surpass traditional wrought iron. Designed to coordinate with and accommodate various seating styles and configurations. Available in all finishes.



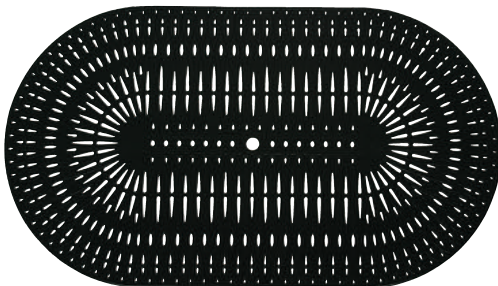
24" Round Cast Top
MCAS-024
36" Round Cast Top
MCAS-036



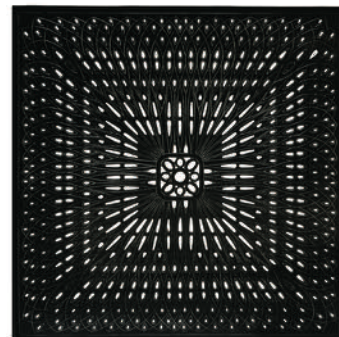
30" x 52" Oval Cast Cocktail/Dining Top
MCAS-052
Top fits bases M9307B and M9907B and Balcony
Height Bases M9352B and M9352BB



54" Round Cast Top with Hole
MCAS-054
42" Round Cast Top with Hole
MCAS-042



48" x 84" Oval Cast Dining Top with Hole
MCAS-084



64" Square Cast Dining Top with Hole
MCAS-064

SOLID SURFACE STAMPED ALUMINUM TOPS

Simple elegant design coordinates with various seating styles and configurations. Available in all finishes.



24" Round RoundTop
MSOL-24



44" x 84" Oval Top with Hold
MSOL-84

NOTE THAT TOPS AND BASES ARE SOLD SEPARATELY.

Dining table bases are "KD" (knock down - assembly required). On "KD" table bases the cast aluminum bracket attaches the legs to the inner ring. Easy to follow instructions for assembly are included with each table base.

TABLE BASES FOR ALTERNATIVE TOPS | 9900 SERIES

These table bases fit any relative size alternative top.
Available in all finishes.



27" x 52" Rectangular Cocktail Table
M9907B
Any -052 Top



24" Round Occasional Table
M9924B
Any -024, -S24 or -022 Top



42" Round Dining Table
M9942B
Any -036, -042 or -043 Top



42" Round Bar Table
M9942BH
Any -036, -042 or -043 Top



54" Round Low Cocktail Table
M9954BL
Any -054, -055 or -060 Top, and
MESL-H64 Top
Note: This base does not fit MCAS-064 Top.
See bases M9964B, M9964BB
42" Round Low Cocktail Table
M9942BL
Any -036, -042 or -043 Top



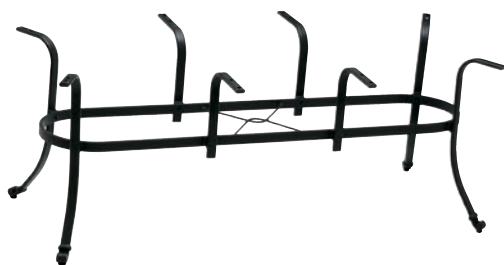
64" Square Dining Table
M9964B
MCAS-064 Top
64" Square Balcony Height Table
M9964BB
MCAS-064 Top
Note: These bases do not fit the
MESL-H64 Hexagon Top.
See bases M9954B, M9954BB,
M9954BL



42" Round Balcony Height Table
M9942BB
Any -036, -042 or -043 Top
54" Round Balcony Height Table
M9954BB
Any -054, -055 or -060 Top, and
MESL-H64 Top
Note: This base does not fit
MCAS-064 Top.
See bases M9964B, M9964BB



54" Round Dining Table
M9954B
Any -054, -055, -060 Top, and
MESL-H64 Top
Note: This base does not fit
MCAS-064 Top.
See bases M9964B, M9964BB



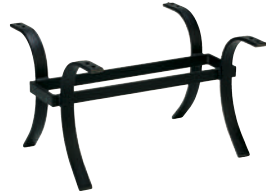
60" x 91" Rectangular Dining Table
M9990B
Any -090 Top



84" Oval Dining Table
M9984B
Any -084 or -088 Top
42" x 73" Rectangular Dining Table
M9973B
Any -073 Top

TABLE BASES FOR ALTERNATIVE TOPS | 9300 SERIES

These table bases fit any relative size alternative top.
Available in all finishes.



27" x 52" Rectangular Cocktail Table
M9307B
Any -052 Top



24" Round Lamp Table
M9328B
Any -024, -S24 or -022 Top



52" Rectangular Dining Table
M9352B
Any -052 Top



42" Round Bar Table
M9342BH
Any -036, -042 or -043 Top



42" Round Balcony Height Table
M9342BB
Any -036, -042 or -043 Top
54" Round Balcony Height Table
M9354BB
Any -054, -055, -060 Top, and
MESL-H64 Top
Note: This base does not fit
MCAS-064 Top.
See bases M9364B, M9364BB



52" Rectangular Balcony Height Dining Table
M9352BB
Any -052 Top



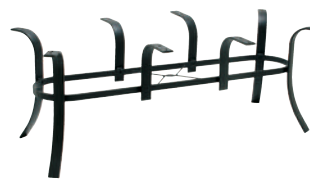
42" Round Low Cocktail Table
M9342BL
Any -036, -042 or -043 Top
54" Round Low Cocktail Table
M9354BL
Any -054, -055, -060 Top, and
MESL-H64 Top Note: This base does
not fit MCAS-064 Top.
See bases M9364B, M9364BB



54" Round Dining Table
M9354B
Any -054, -055, -060 Top, and
MESL-H64 Top
Note: This base does not fit the
MCAS-064 Top.
See bases M9364B, M9364BB



64" Square Dining Table
M9364B
MCAS-064 Top
64" Square Balcony Height Table
M9364BB
MCAS-064 Top
Note: These bases do not fit the
MESL-H64 Hexagon Top.
See bases M9354B, M9354BB,
M9354BL



60" x 91" Rectangular Dining Table
M9390B
Any -090 Top



84" Oval Dining Table
M9384B
Any -084 or -088 Top
42" x 73" Rectangular Dining Table
M9373B
Any -073 Top

42" Round Dining Table

M9342B
Any -036, -042 or -043 Top

48" Round Dining Table

M9348B
Any -048 Top

SOLID TOP TABLES

Rustproof resort grade aluminum frames and table tops | Flush edged design for the ability to gang multiple tables seamlessly | Available in all finishes



WINSTON™

OBSCURE GLASS TOP TABLES

NOT FOR CONTRACT USE



54" Round Dining Table*

M8154RGU

54"W x 54"D x 38"H

48" Round Dining Table*

M8148RGU

48"W x 48"D x 28"H



Occasional Table*

M9207G

18.75"W x 18.75"D x 17.5"H



Occasional Table*

M8324G

24.5"W x 24.5"D x 18"H



42" x 84" Oval Dining Table*

M8184RGU

42"W x 84"D x 28"H

42" x 76" Oval Dining Table*

M8176RGU

42"W x 76"D x 28"H

STAMPED ALUMINUM TABLES

Winston Aluminum Stamped tops are created from 3/16" solid aluminum. The geometric pattern of circles give these tables design simplicity and sophistication. Available in all finishes.



**18" Round Side Table
with Stamped Top**

M1018-ST

18"W, 18"D, 19"H



**42" Dining/Umbrella Table
with Stamped Top**

M1042-ST

42"W, 42"D, 28"H

**48" Dining/Umbrella Table
with Stamped Top**

M1048-ST

48"W, 48"D, 28"H

SOLID TOP TABLES

Designed to accentuate a full spectrum of styles, Winston Solid Top Tables are developed with clean lines, sensible proportions, and durable materials. Available in all finishes.



44" Square Dining Table

M20044DT

44"W 44"D 29.5"H



44" x 73" Rectangle Dining Table

M20074DT

73"W 44"D 29.5"H



27" x 54" Coffee Table

M20067

54"W 27"D 18.5"H



24" Square Side Table

M20006

24"W 24"D 24"H



44" Square Chat Table

M20044CT

44"W 44"D 29.5"H



44" Square Bar Table

M20044BH

44"W 44"D 39.25"H

FRAME FINISHES

What makes Winston's frame finishes so durable and long-lasting has more to do with what we do to prepare the frames than the end results. A superior finish begins with the preparation of the surface area. It begins with cleaning the aluminum frames. The "Primer System" Winston utilizes is a 7-step process that takes approximately 45 minutes to complete per frame.

First, each frame receives an alkaline bath that degreases and etches the frame. Two clean water rinses follow to remove the alkaline residue as well as any etched particles. Next a chrome phosphate conversion coating is applied that seals the frame and prevents the formation of corrosion. This step is followed by two additional clean water rinses in preparation for the final stage. During the final stage each frame is "deionized" which removes any mineral deposits that might be left from any of the prior stages. This step also provides a greater bonding surface of the aluminum for optimal adhesion of the powder paint. Winston's paint finishes begin as a very fine, electrostatic polyester powder that is sprayed onto the frame. The powder is "charged" so that the powder attaches to the frame much like metal to a magnet. This provides complete and even coverage of the powder. Once covered with the powder, the frames enter a large oven area whereby the frames are heated to a very high temperature which melts the powder. The oven process takes approximately 30 minutes to complete resulting in a durable, baked on finish.



BKN Night



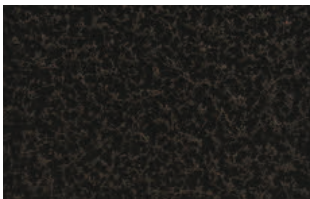
TPW Textured Pewter



JAV Java



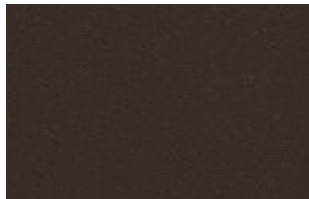
BIS Antique Bisque



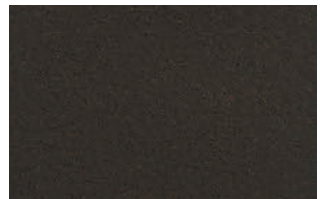
N7 Patina



ESP Espresso



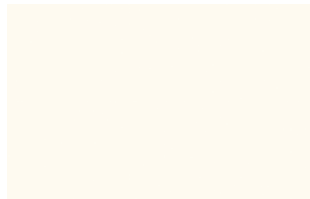
OLY Olympic Gold



BRZ Bronze



DRF Driftwood



SWH Smooth White



N4 Antigua

SEPTEMBER 2019

Winston Furniture Company reserves the right to modify, add, or discontinue products, finishes or fabrics without notice. Printed images are not a guarantee of color accuracy. All images, copy, and content are the property of Winston Furniture Company and cannot be reproduced without permission.

WINSTON[®]
FURNITURE COMPANY
————— est. 1975 —————

LOUISVILLE, KY | HALEYVILLE, AL